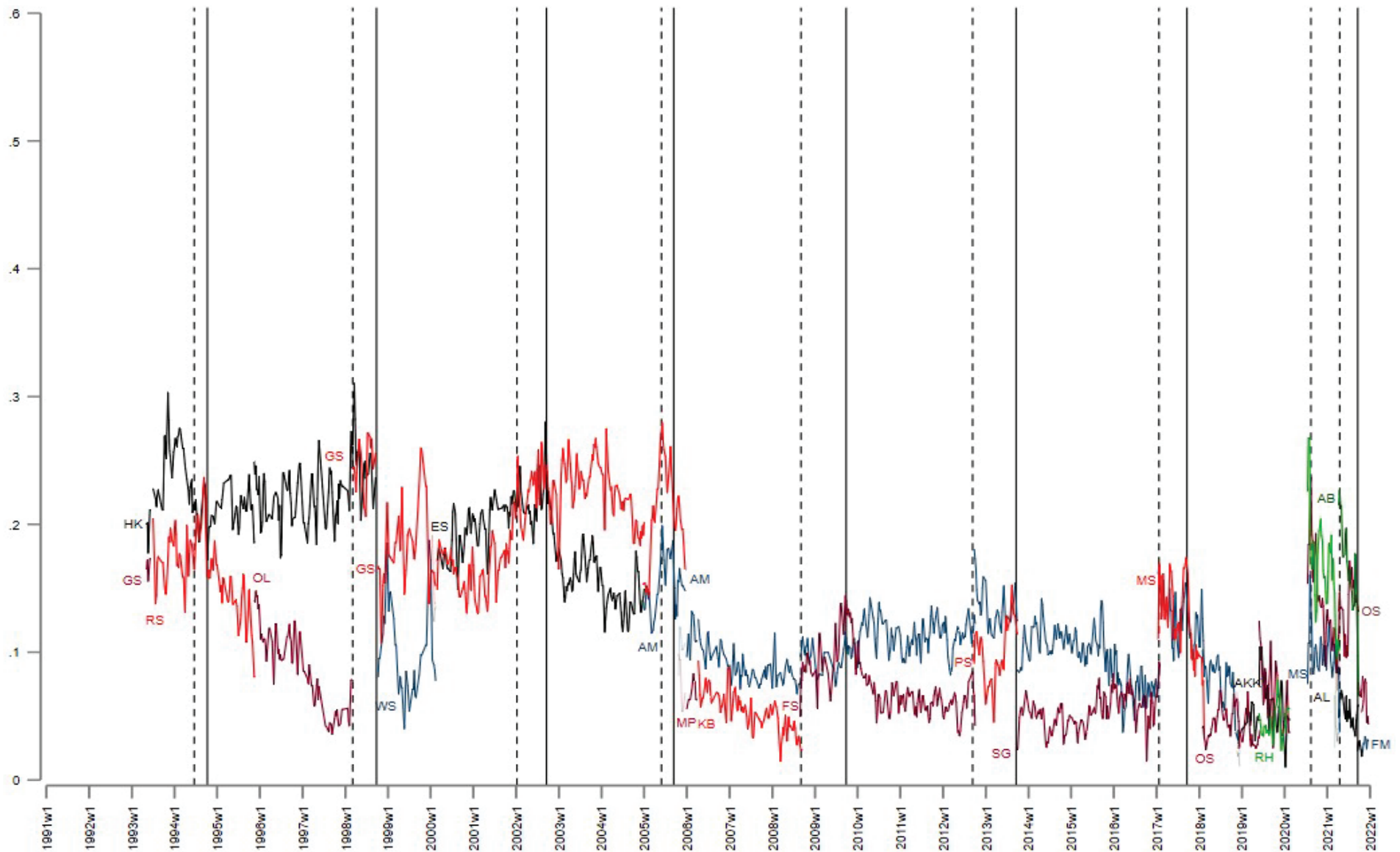


**Figure A1:** Development of chancellor candidate effects from 1991 to 2021 (pessimistic estimate 1)



Dashed vertical lines: challenger nominated; solid vertical lines: Bundestag election; colours of lines show party affiliation: CDU/CSU: black/navy, SPD: red/cranberry, Greens: green; transparent lines: new candidate set, while old constellation is still polled; initials used, for full names, see Table A2; underlined initials: incumbent chancellor.